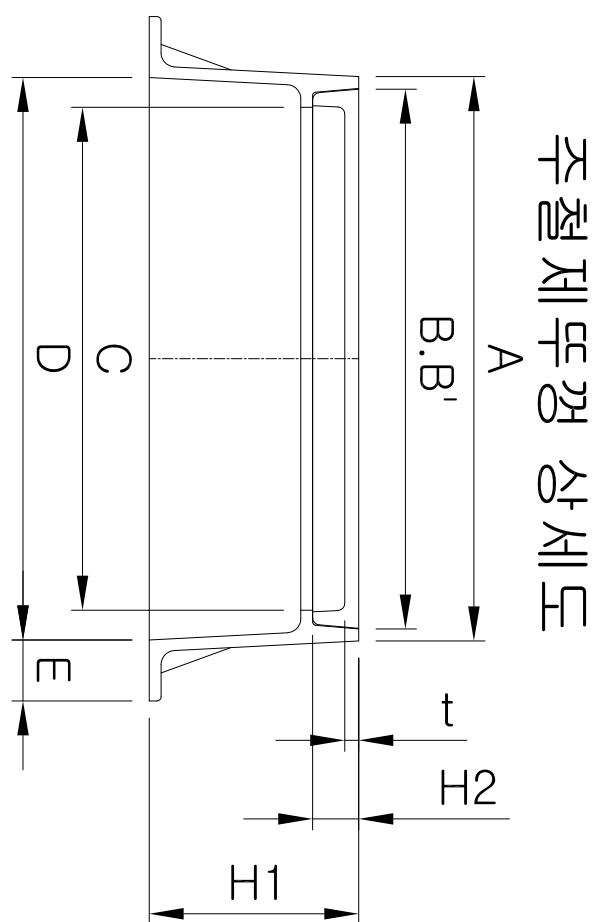
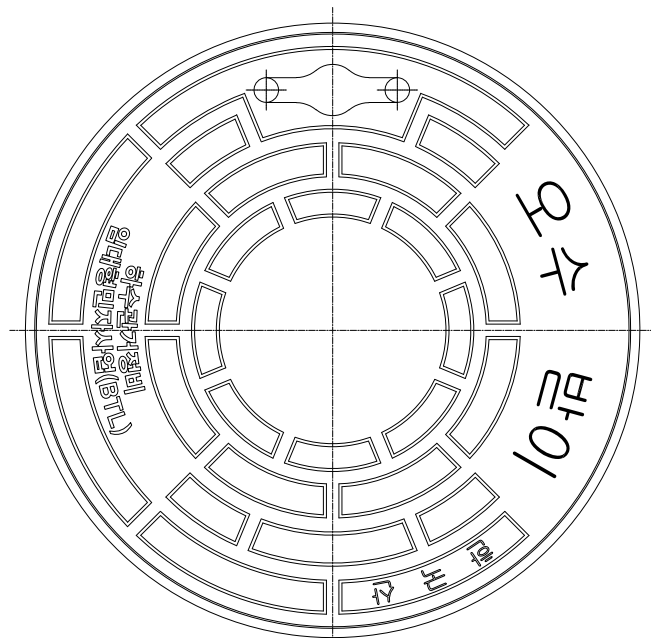
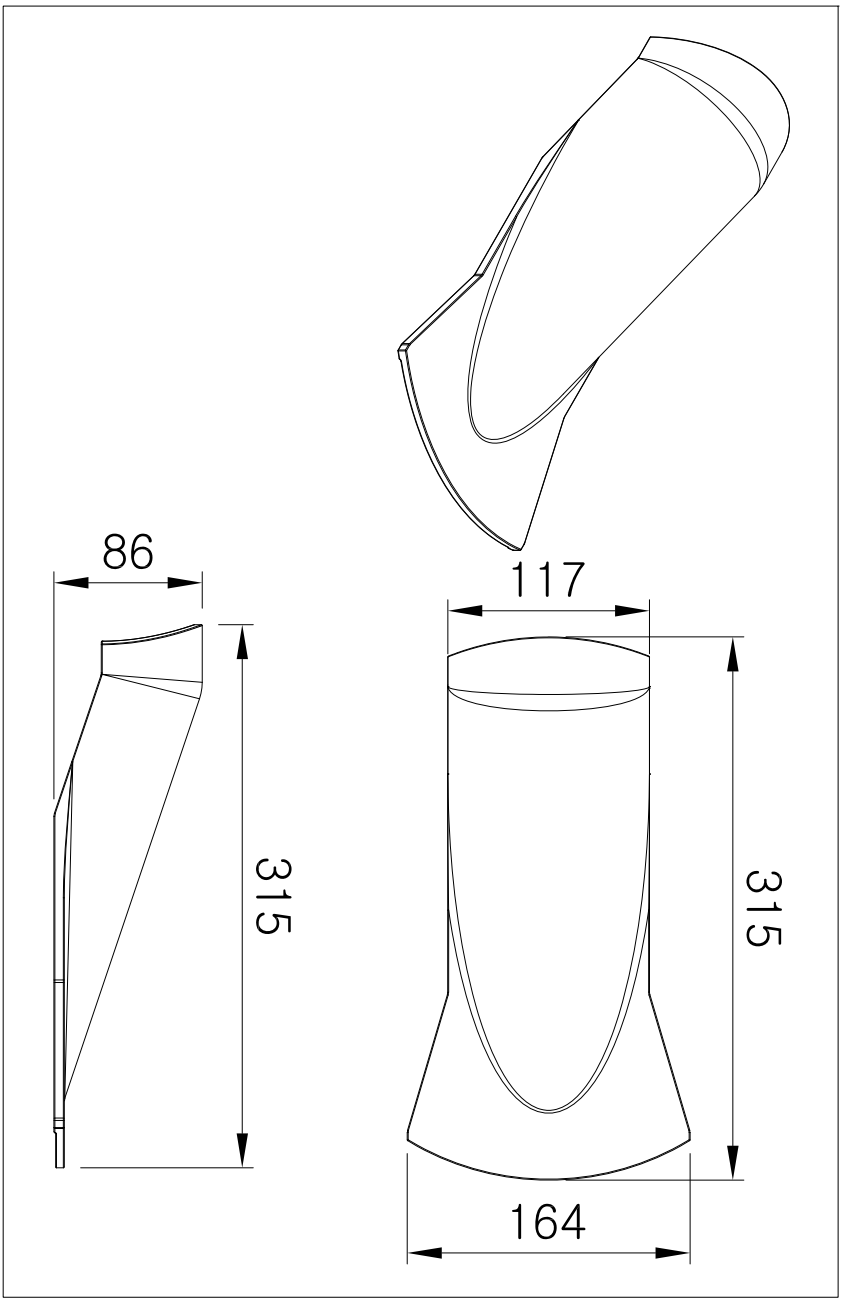
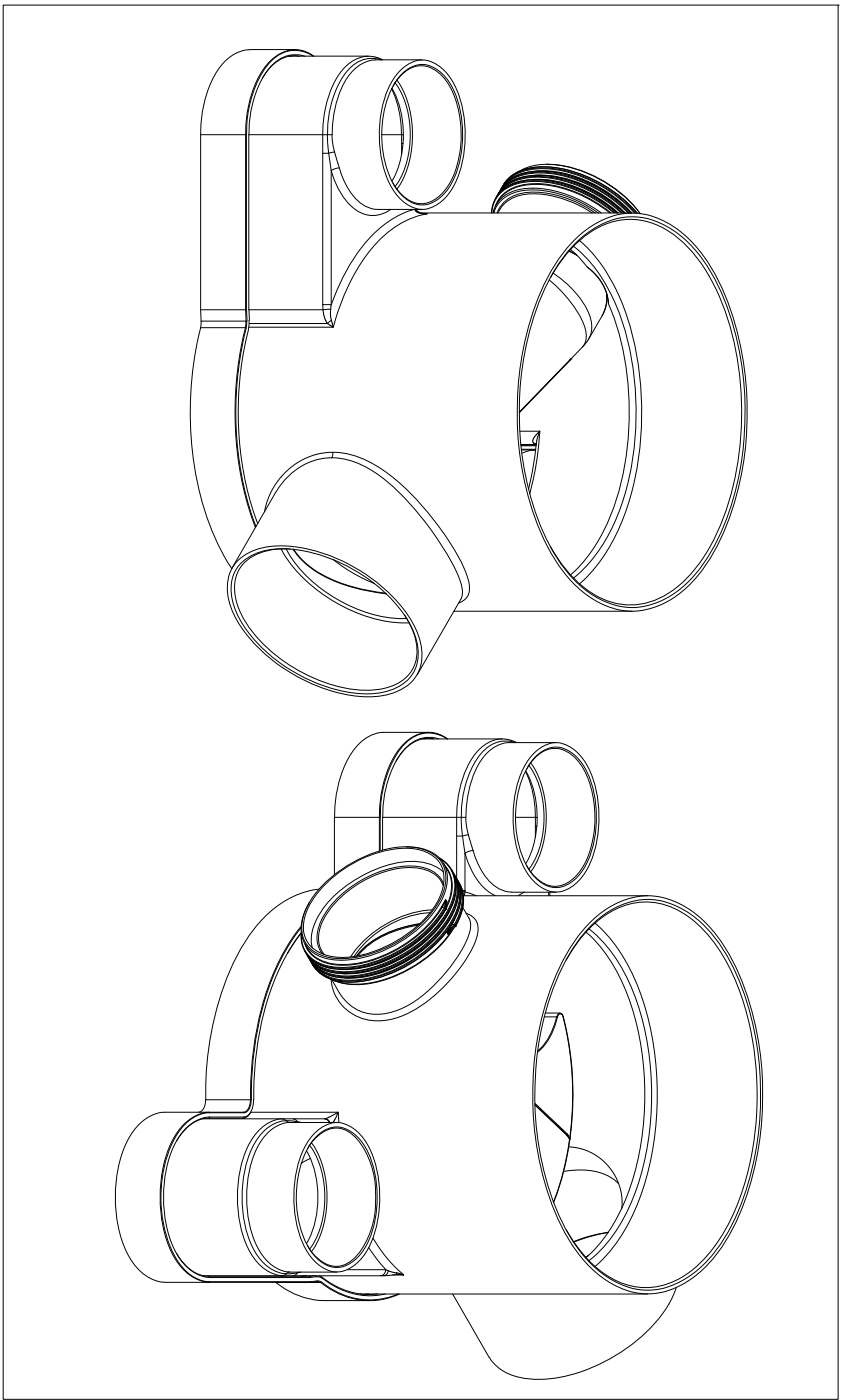
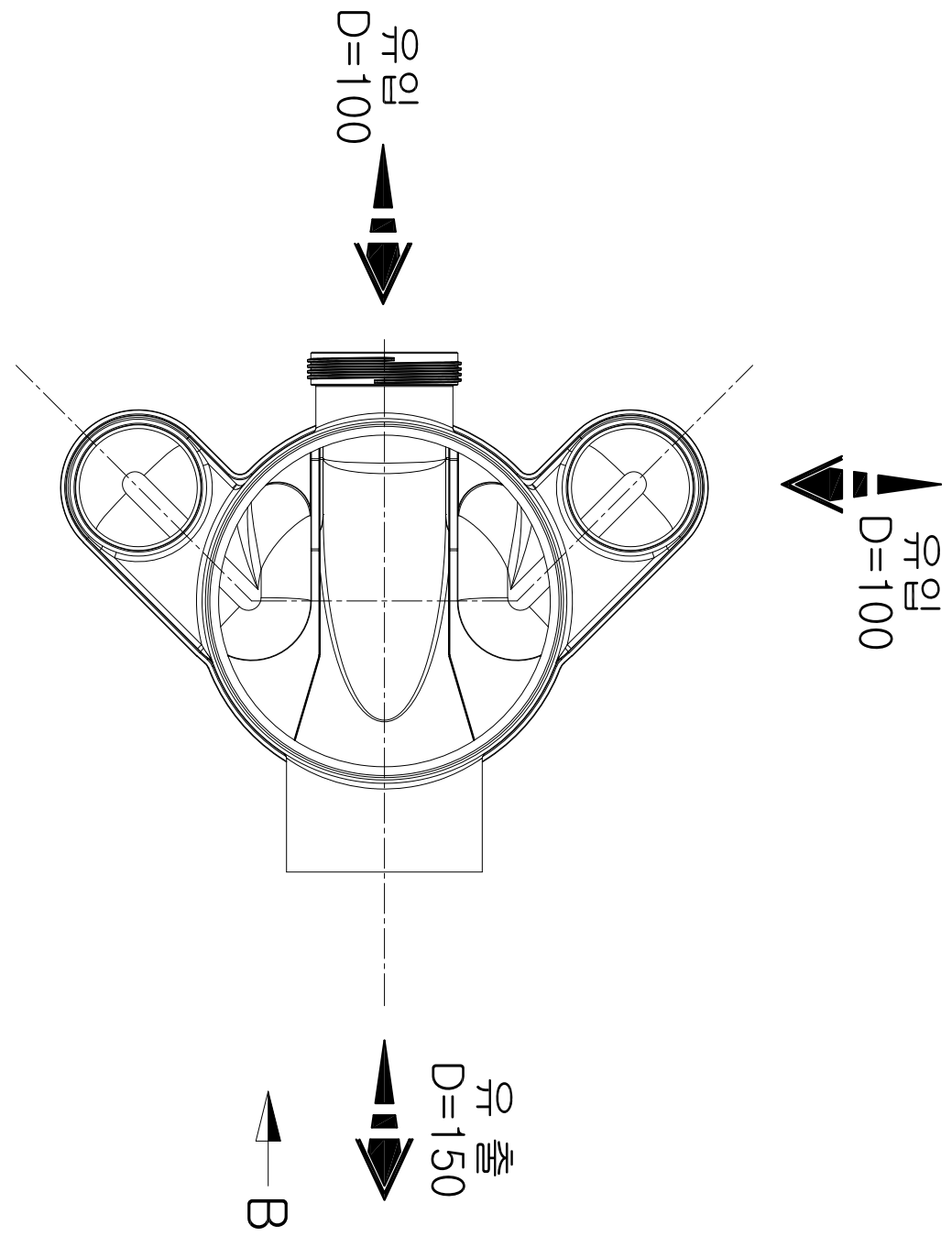
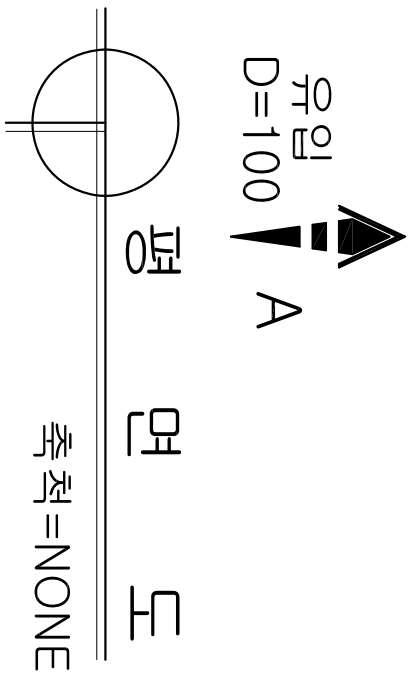


유로분리형 오수받이 상세도

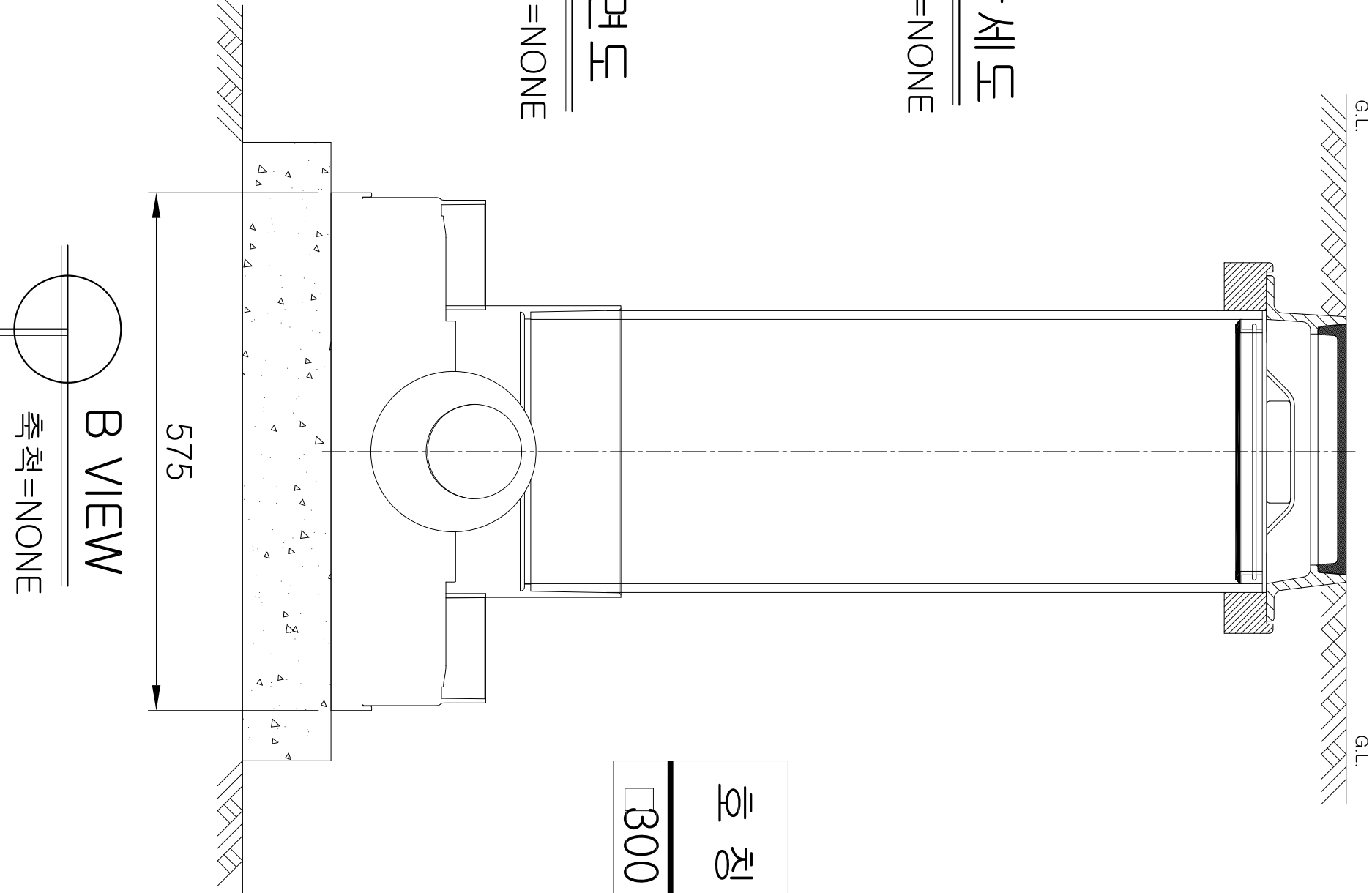
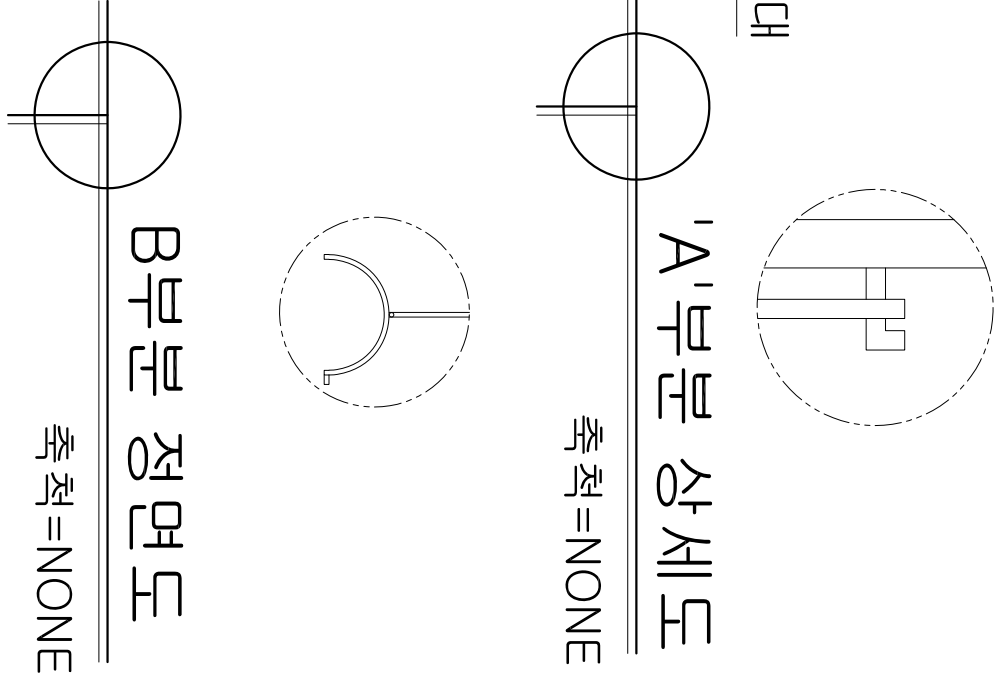
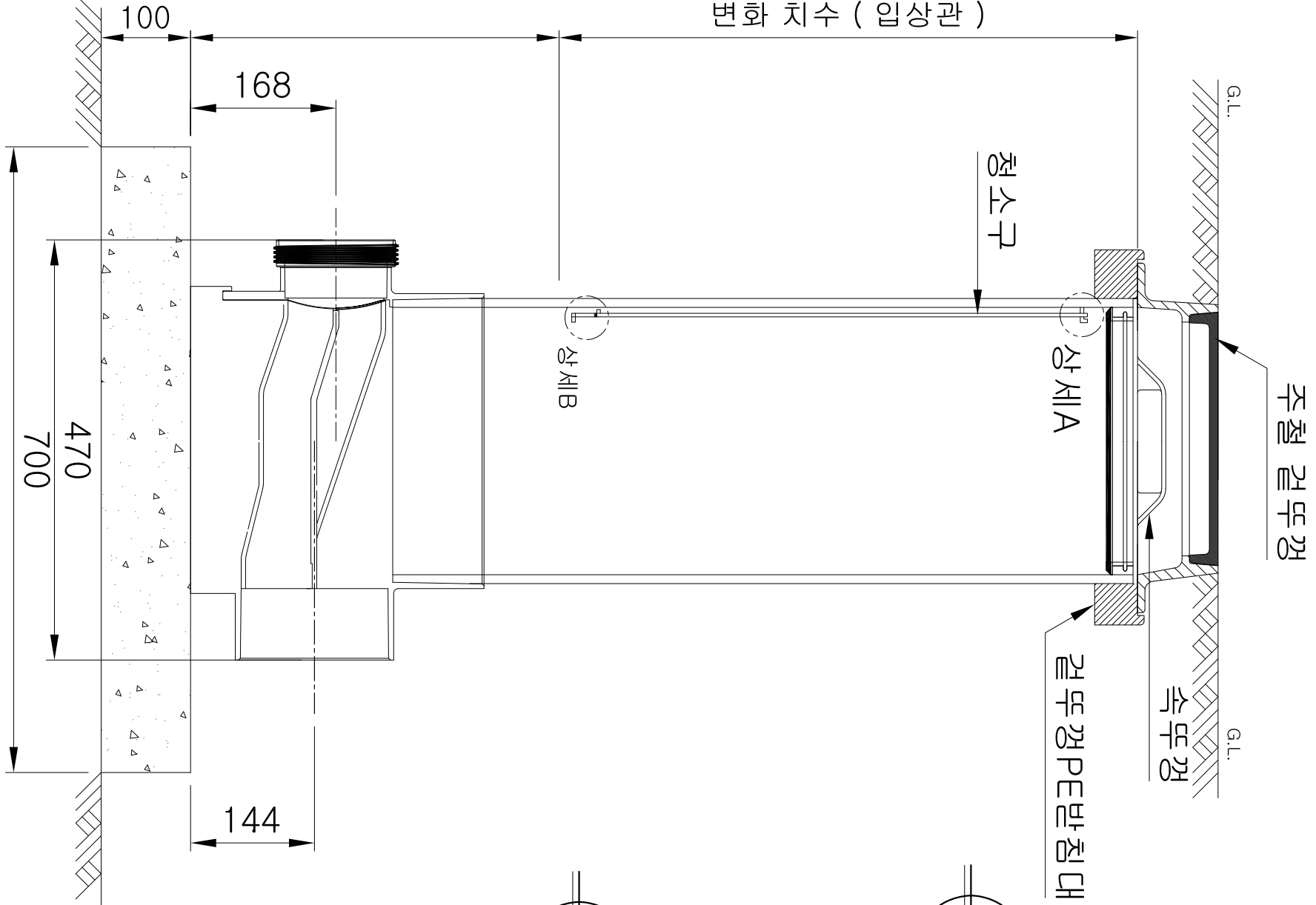


제품 ISOMETRIC
축척=NONE

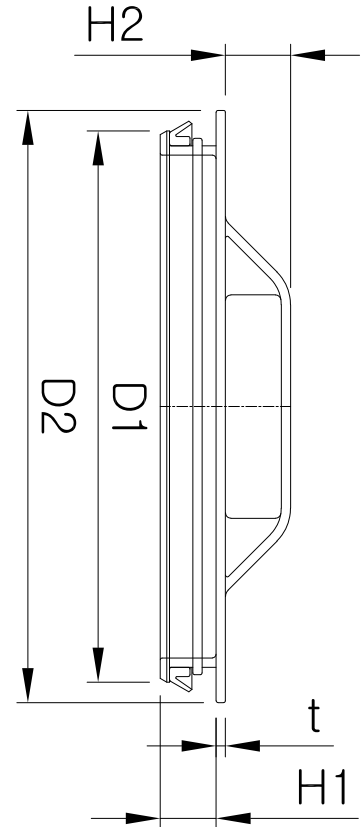
본수소켓상세도
축척=NONE



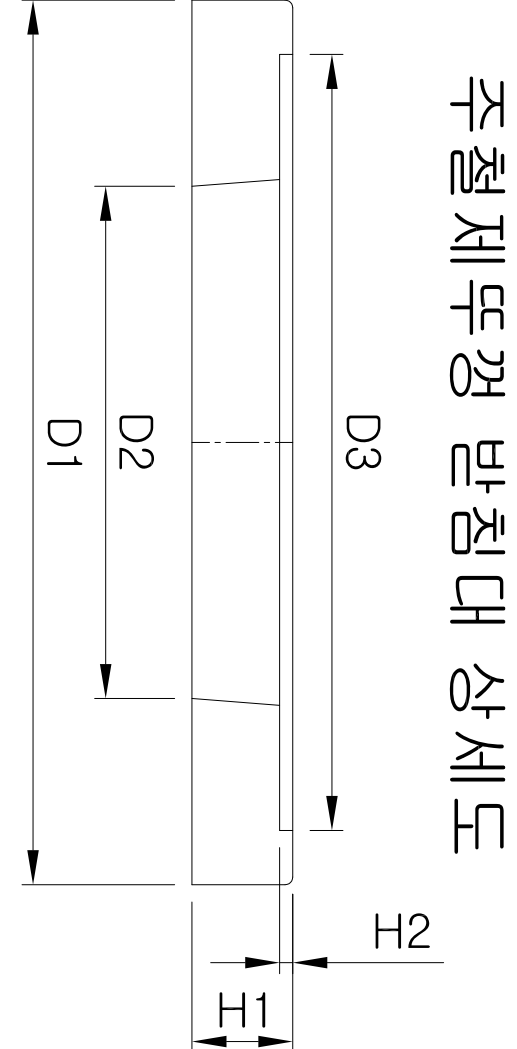
호 칭	A	B.B'	C	D	E	H1	H2	t
(최소)	(최소)	(최소)	(최소)	(최소)	(최소)	(최소)	(최소)	(최소)
□300	403	386	360	400	40	150±2.5	28	6



호 칭	D1	D2	H1	H2	t
(최소)	(최소)	(최소)	(최소)	(최소)	(최소)
□300	296	318	40	40	5



호 칭	D1	D2	D3	H1	H2
(최소)	(최소)	(최소)	(최소)	(최소)	(최소)
□300	570	330	455	60	5



- * NOTE
- 재질 및 사용하중
- 부경 및 받침틀 : KSD 6201
- LIFT HANDLE 및 BOLT (SUS 304), O-RING NBR
- 정하중 : 육상 - 40,000kg 이상
- 재 질 : GCD 450
 - 부경과 받침틀 (FRAME SEET)은 기계가공을 한다.
 - 맨홀부경 전면에는 지자제명, 설치년도, 하중 및 용도를 표기하고 유지관리를 위한 맨홀 관리번호 및 설치년도를 맨홀내 상단부에 부착한다.
 - 도면에 표기된 단위는 mm이다.

Since1968

SHINWOO

DESIGNED BY : - K. D. KIM	DATE:
ORDERED BY : - J. H. KIM	CONTRACT NO.:
APPROVED BY : - J. H. KIM	SUBMITTED BY : - H. K. KIM
FILE NAME:	
PLOT SCALE: A3	

PROJECT TITLE NONE		DRAWING NUMBER	SW - CHAMBER
유로분리형 오수받이 상세도		REVISION NUMBER	REV. 0